

GLENDALE ELEMENTARY SCHOOL DISTRICT NO. 40

Special Meeting of the Governing Board

January 25, 2018 4:30 p.m.

Public Notice - Meeting Agenda

Notice of this meeting has been posted consistent with the requirements of A.R.S. §38-431.02.

The meeting's location is the Governing Board Room in the District Office, 7301 N. 58th Avenue, Glendale.

The Board reserves the right to change the order of items on the agenda, with the exception of public hearings, which are scheduled for a specific time. Governing Board members may participate via telephone conference call if necessary. The Governing Board reserves the right to convene to executive session for the purpose of obtaining legal advice from its attorney for any item listed on the agenda, in person or by telephone, pursuant to A.R.S. §38-431.03(A)(3).

GOVERNING BOARD PRIORITIES

- Student Achievement
- Quality Teachers and Staff
- Financial Stability
- Community Engagement

OUR GOALS

Increase Student Achievement Eliminate the Achievement Gap

1. Call to Order and Roll Call

2. Opening Exercises

- a. Adoption of Agenda
- b. Approval of Acting Clerk (if necessary)

3. Study Session

Demographic Study

The Governing Board will conduct a study session regarding the results of the recent Demographic Study.

4. Call to the Public

The public is invited to address the Board on any issue within its jurisdiction, subject to reasonable time, place and manner restrictions. Governing Board members are not permitted to discuss or take legal action on matters raised during open call to the public unless the matters are properly noticed for discussion and legal action. However, the law permits Board members to do the following at the conclusion of the open call to the public: (a) Respond to criticism made by those who have addressed the Board; (b) Ask staff to review a matter; or (c) Ask that a matter be put on a future agenda.

Those wishing to address the Board should complete a "Call to the Public" form and submit it to the Board Secretary prior to the start of the meeting. Each speaker will be provided three (3) minutes to address the Board, unless provided other direction by the Board. At the outset of the speaker's remarks, the speaker should state their name and the Board requests that the speaker provide his/her address.

5. Action Items

Fundraiser Activity Requests

It is recommended the Governing Board ratify and approve the list of fundraiser activity requests as presented.

Certified Contract Renewals

It is recommended the Governing Board approve the renewal of certified staff (non-administrative) employment contracts for the 2018-2019 school year.

Certified Personnel Report

It is recommended the Governing Board approve the employments, resignations, retirements, promotions, leaves of absence, cancellations of employment, terminations, and/or contract renewals of certified personnel.

d. Classified Personnel Report

It is recommended the Governing Board approve the employments, resignations, retirements, promotions, leaves of absence, cancellations of employment, and/or terminations of classified personnel.

6. Executive Session

At this time, the Governing Board will consider voting to recess the regular meeting in order to convene to executive session for the following purposes:

- a. In accordance with A.R.S. § 38-431.03.A.5, for the purpose of consultation with or instruction to designated representatives as to negotiations regarding salaries or compensation in the form of benefits for District employees.
- b. In accordance with A.R.S. § 38-431.03(A)(1) for the purpose of conducting the Superintendent's performance evaluation.
- c. In accordance with A.R.S. §38-431.03(A)(1) for the purpose of discussion regarding the Superintendent's performance-based pay for the 2016-2017 school year.
- d. In accordance with A.R.S. §38-431.03(A)(1) for the purpose of discussion regarding the Superintendent's performance goals.

7. Reconvene to Public Session

8. Action Item

a. Superintendent's Performance Pay

The Governing Board will consider taking action to approve payment of the Superintendent's Performance Pay for the 2016-2017 school year as stipulated in his employment contract for an amount not to exceed \$20,000.

9. Adjournment

GLENDALE ELEMENTARY SCHOOL DISTRICT

STUDY SESSION

AGENDA NO: 3.A. TOPIC: Demographic Study

SUBMITTED BY: Mr. Mike Barragan, Assistant Superintendent for Finance and Business Services

DATE OF REPORT: January 25, 2018

Study Session:

The Governing Board will conduct a study session regarding the results of the recent Demographic Study.

Glendale Elementary School District

Demographic and Enrollment Analysis Update

Governing Board Presentation

January 25, 2018

Presented by:



Study Scope

Enrollment Trends

- Grade and level characteristics
- Geographic distribution
- Alternative providers

Demographic Characteristics

- Population characteristics
- Household type and age structure
- Housing supply and occupancy rates

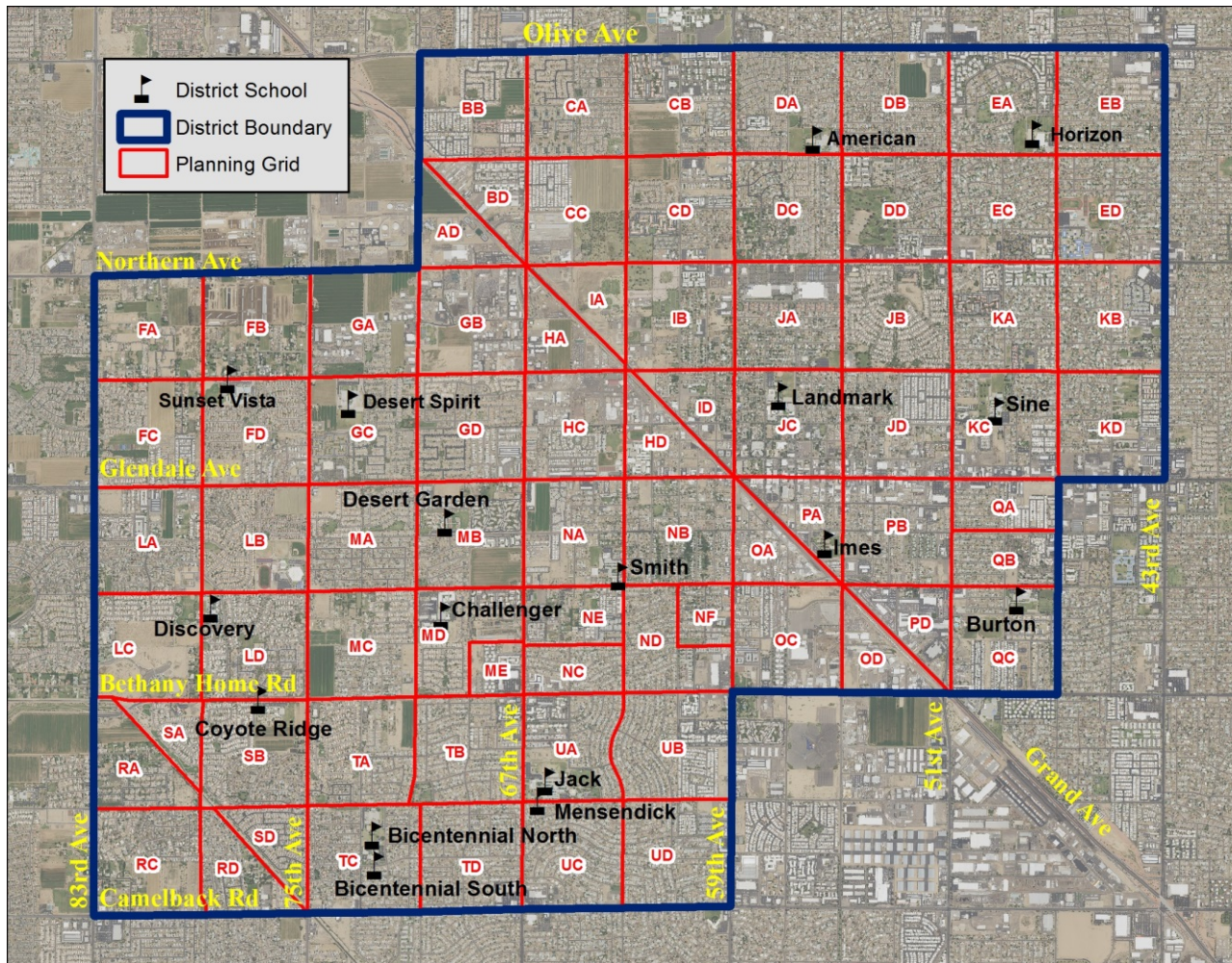
Residential Development Impacts

- Current development activity
- Housing market conditions
- Future development potential

Enrollment Projections

- District
- Sub-district

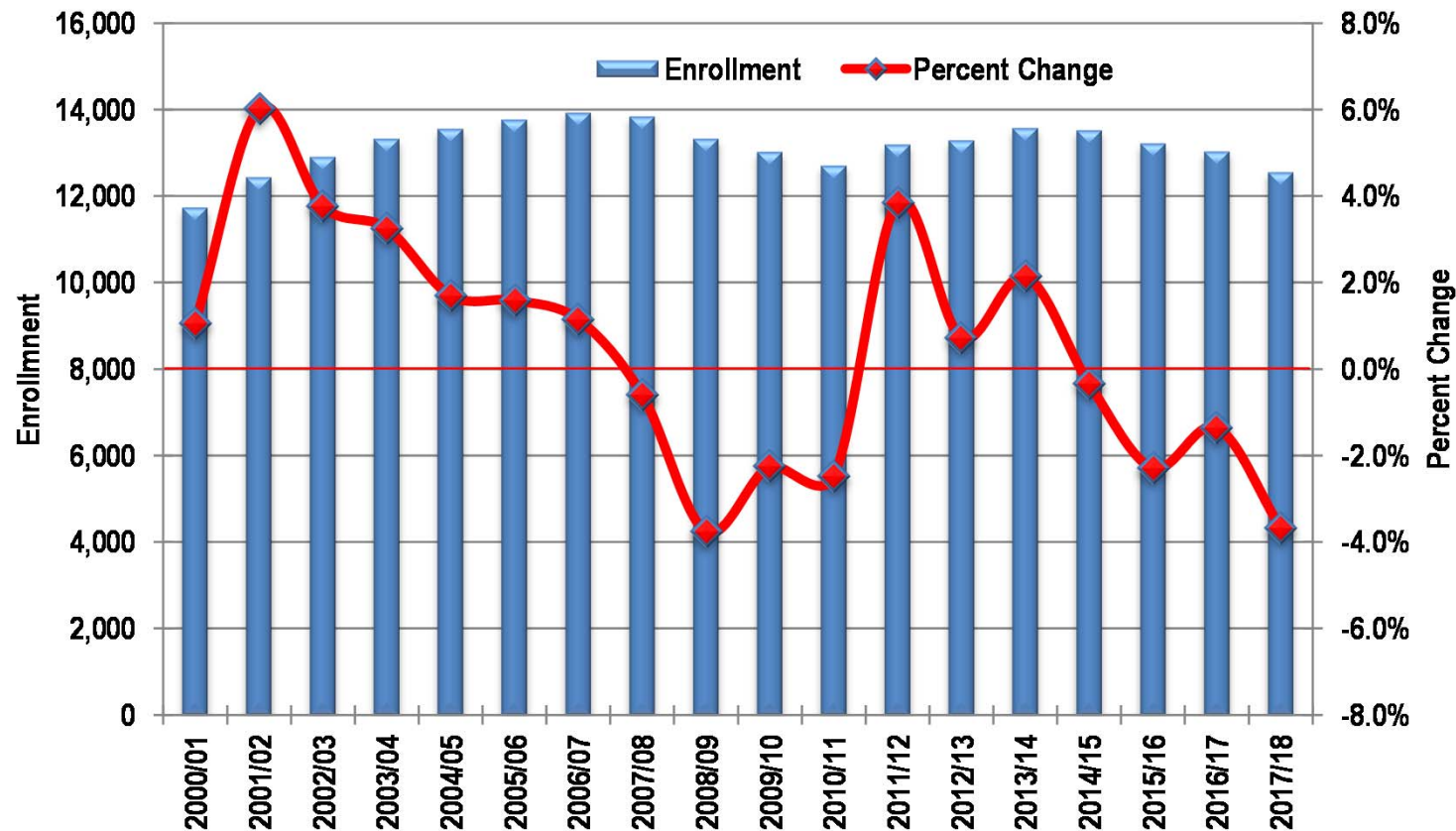
Planning Geography



Planning areas or “grids” are used to compile enrollment and demographic data for consistent areas over time

The grids are a quarter-section or smaller in size

40th Day Headcount Enrollment

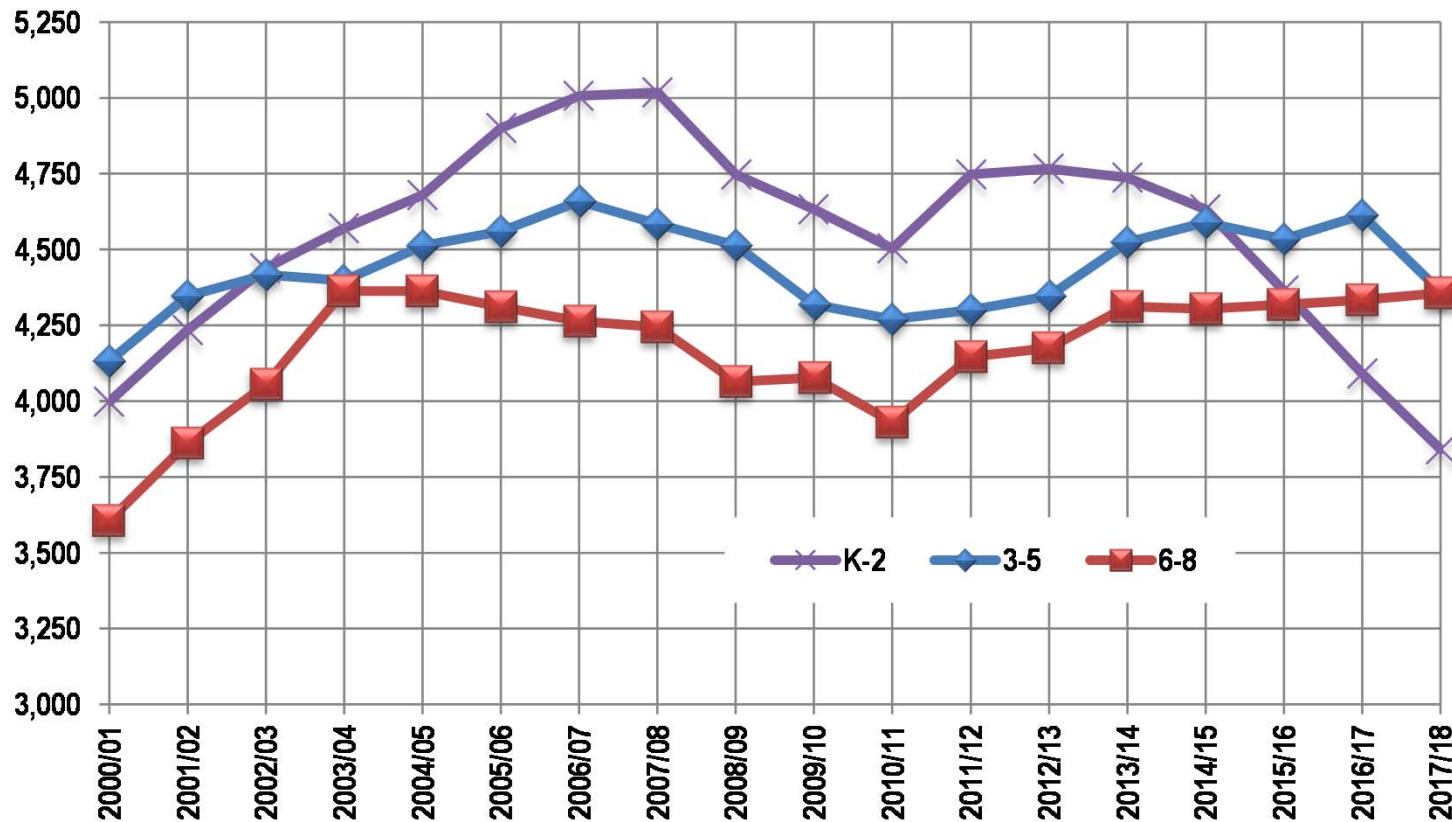


Source: Glendale Elementary School District.

K-8 Enrollment grew by about 19% (2,193 students) between 2000/01 and 2006/07, and then fell by 9% (1,225 students) through 2010/11 driven by the impacts of the recession and immigration policy

District enrollment increased by 869 students from 2010/11 through 2013/14 as the economy recovered, but since then has lost 1,104 students, driven by competition from charter schools and smaller in-coming kindergarten classes

40th Day Enrollment Cohorts



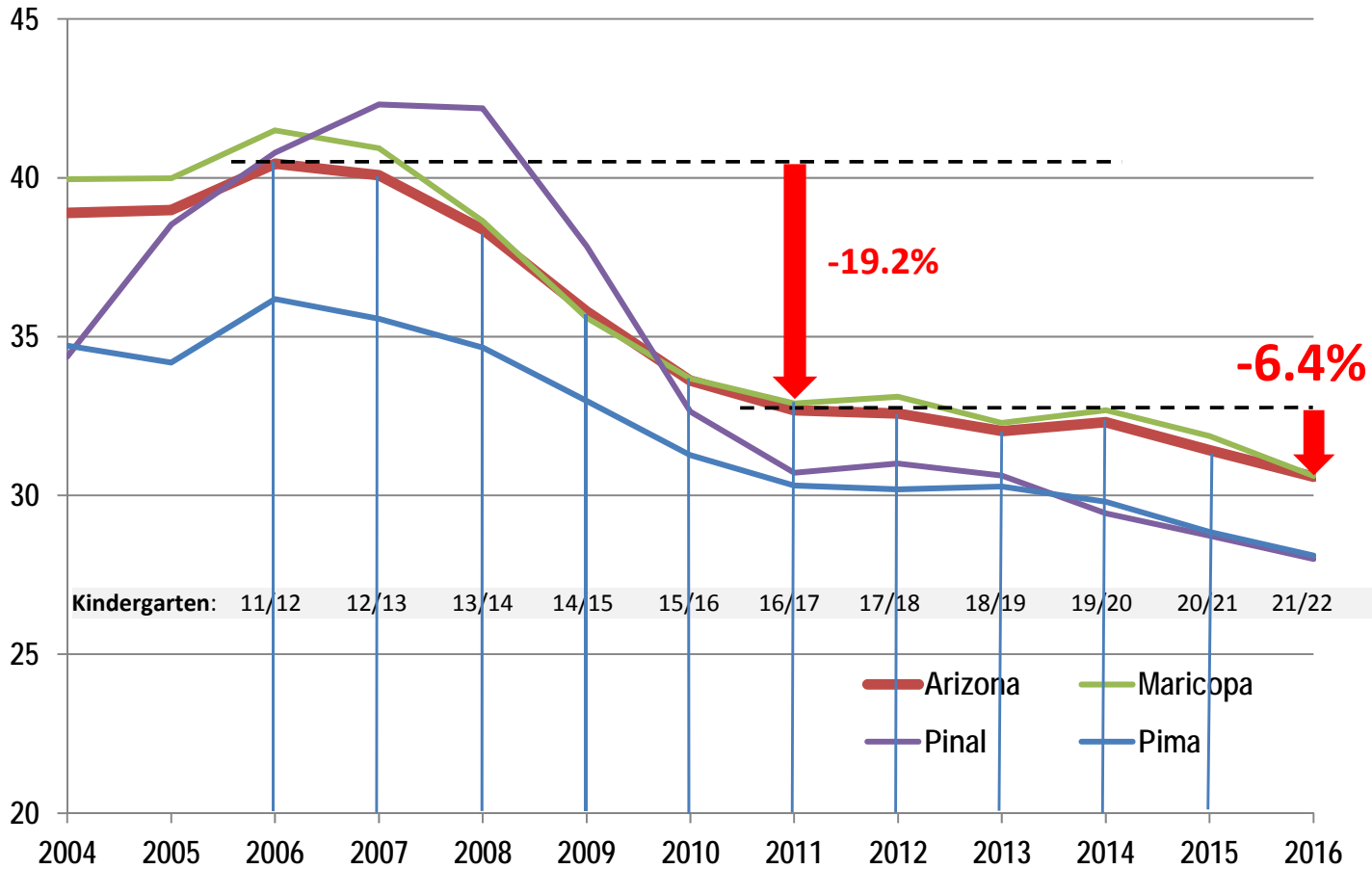
Source: Glendale Elementary School District.

Like most areas the enrollment growth during the boom was led by the youngest grade cohorts, although the older ones have now caught up as the size of the K-2 cohort has plummeted over the past three years

The recent declines in the K-2 cohort are likely a function of lower birth rates during and after the recession, the age structure of the population, and competition from charter schools

Birth Rate Trends

Births per 1,000 people aged 15 to 45

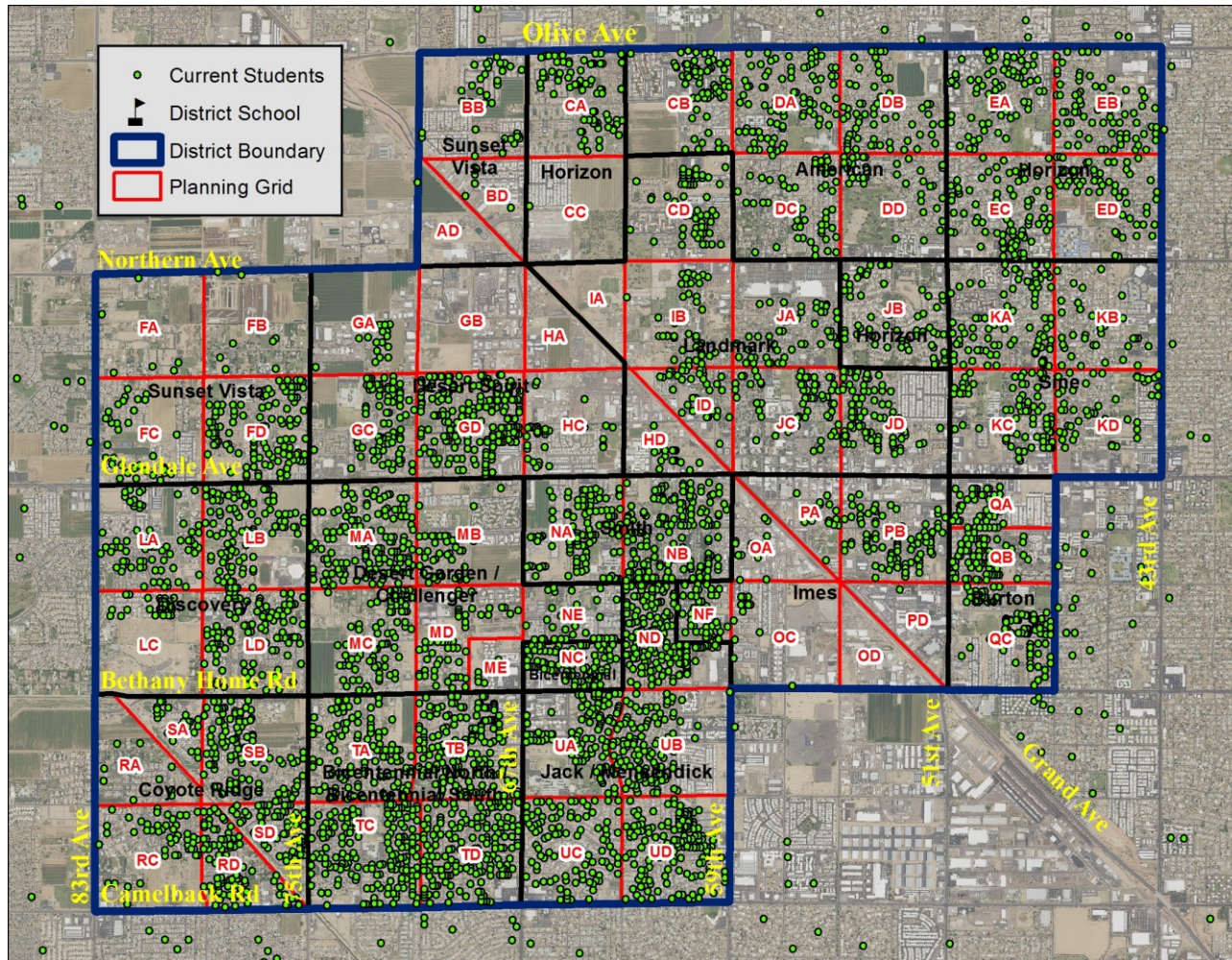


Sources: Arizona Department of Health Services; Applied Economics, 2017.

Birth rates in Arizona plummeted over 19% during the recession

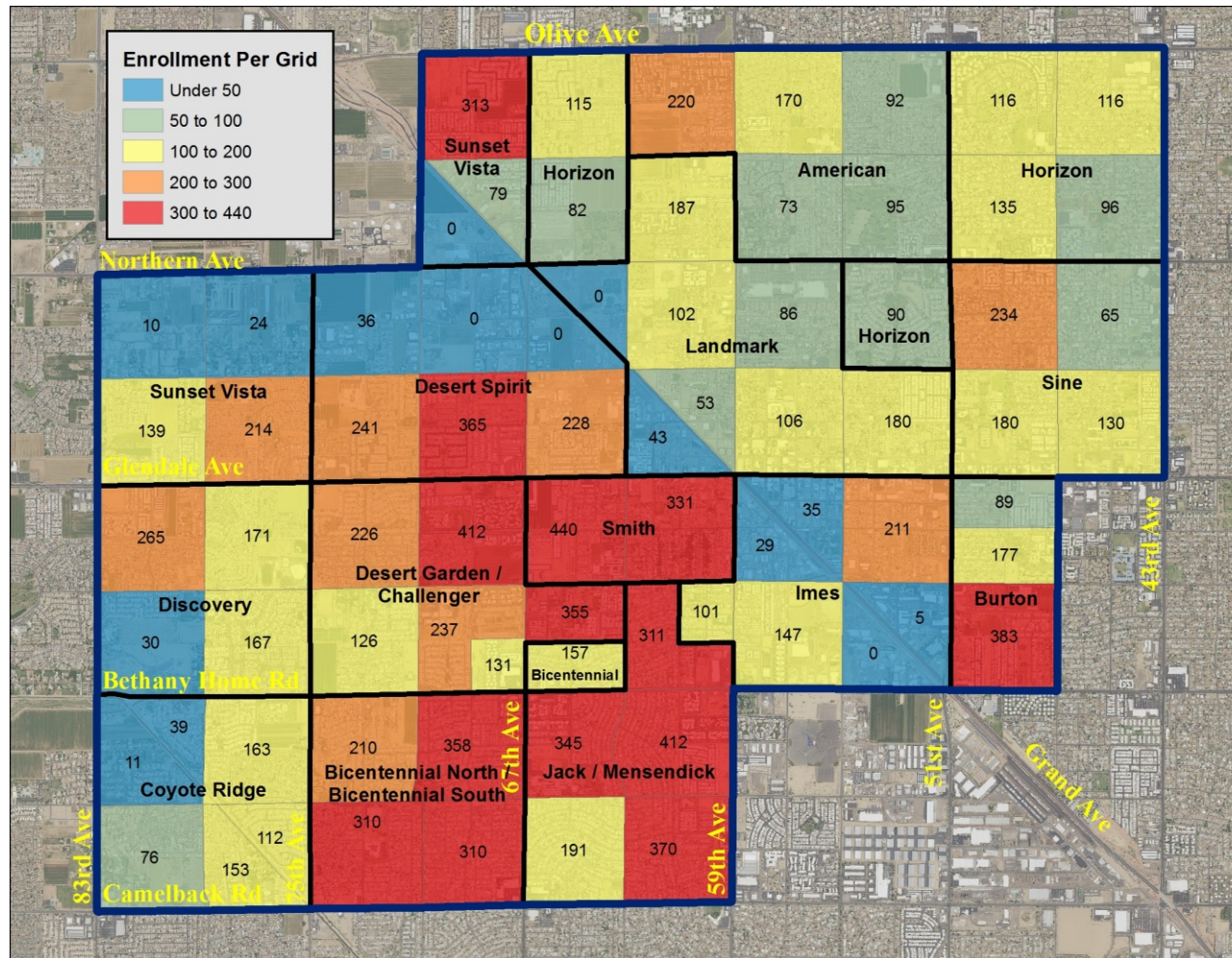
The birth rate stabilized from 2011 through 2014, but headed downward again by over 6% through 2016

Distribution of Students



The physical location of each student is used to track the distribution of enrollment over time and to relate demographic and housing data to student generation

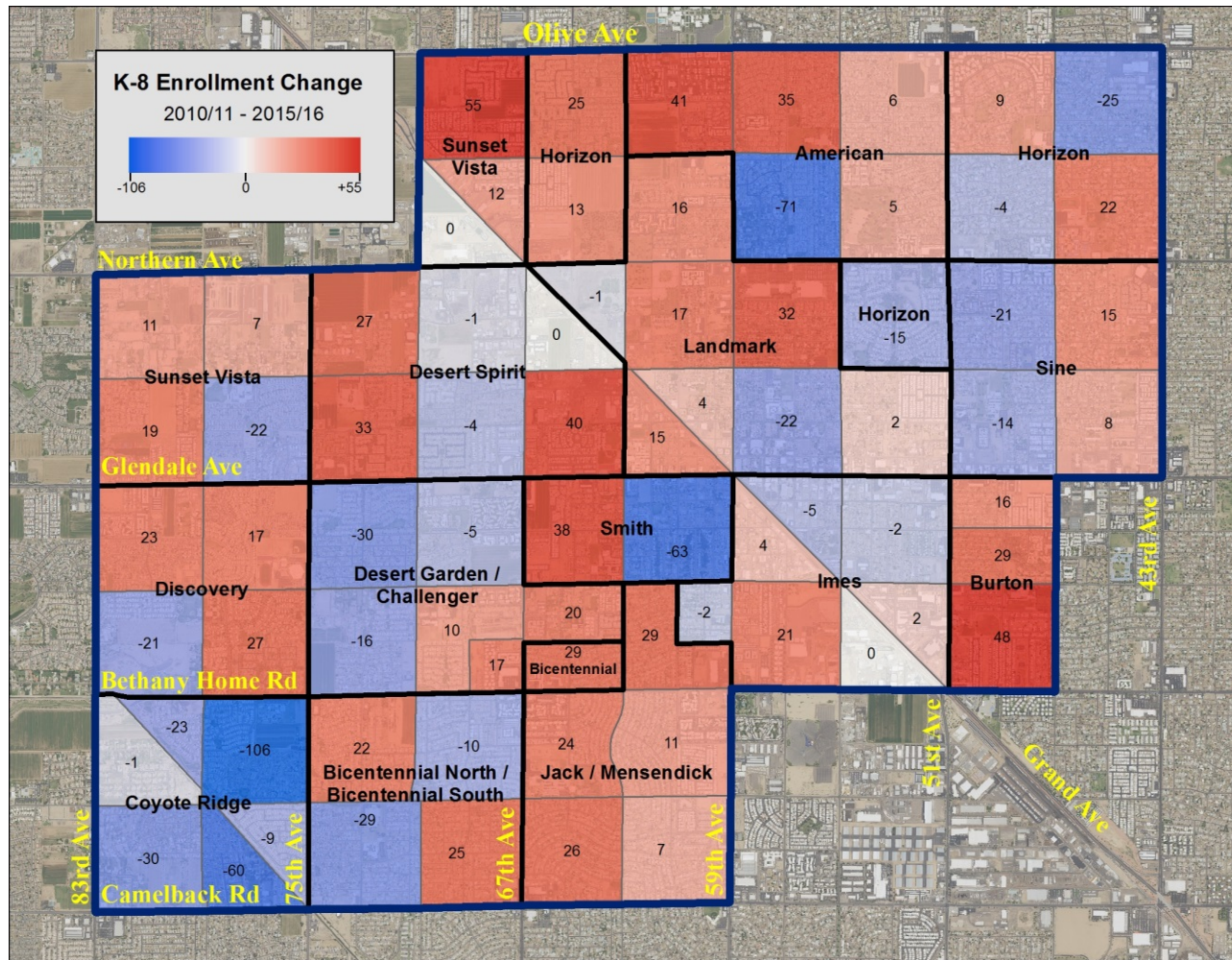
Enrollment Density



Student density varies from very low levels, to some of the highest levels found in metro Phoenix

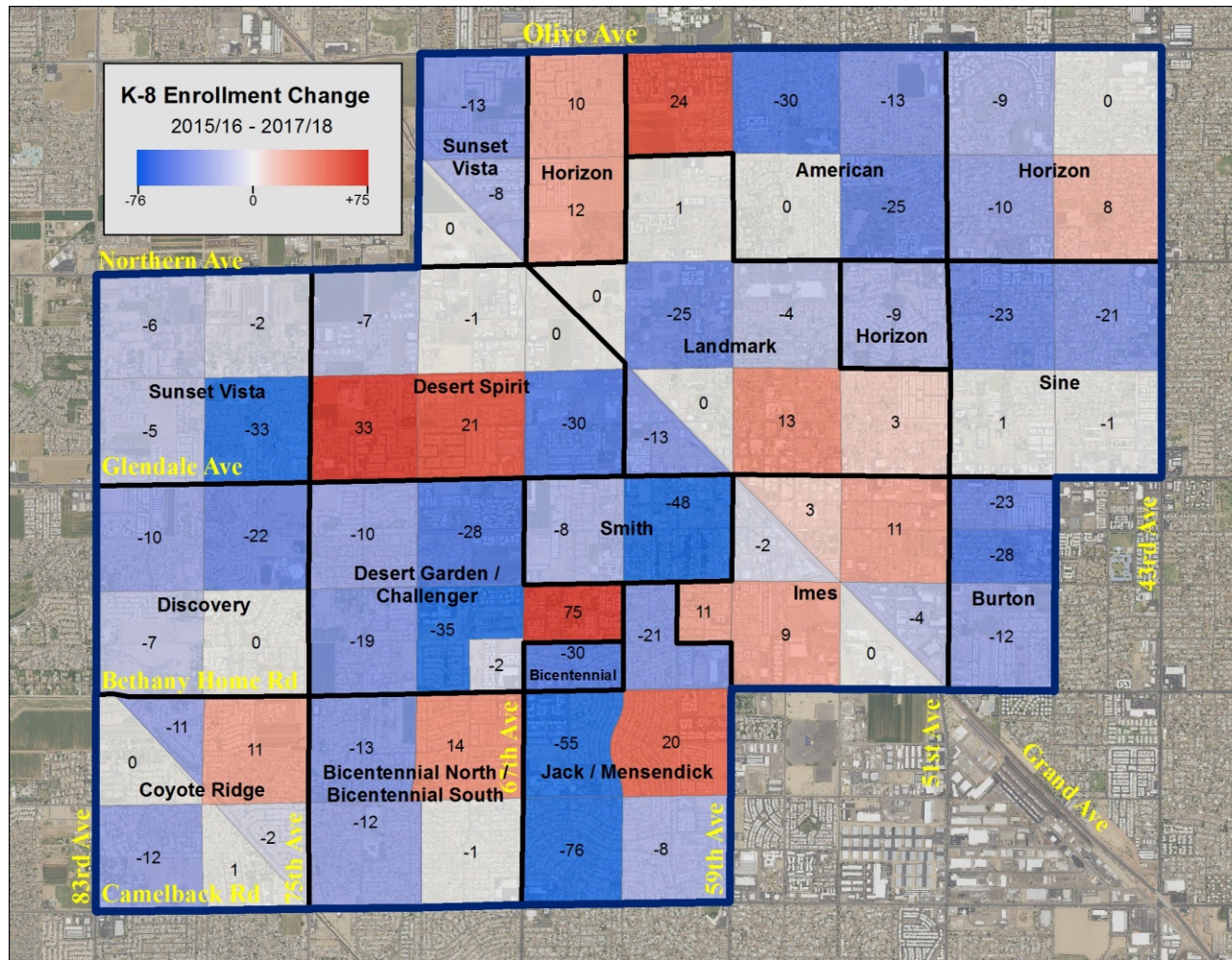
Small, very high density areas create challenges for facility and transportation planning

Change in Enrollment - 2010/11 to 2015/16



Growth in most parts of the District driven by economic recovery

Change in Enrollment - 2015/16 to 2017/18



Widespread losses caused by changing demographics and the draw of charter schools

Demographic Trends

| | 2000 | 2010 | 2017 | Annual Change* | |
|----------------------|---------------------|---------------------|----------------------|----------------|---------|
| | | | | 2000-10 | 2010-17 |
| Population | 25.2% 90,501 | 25.2% 97,573 | 23.2% 106,516 | 0.8% | 1.3% |
| Under 5 | 9.8% | 9.3% | 7.9% | 0.3% | -0.3% |
| 5 to 13 | 15.4% | 15.9% | 15.3% | 1.1% | 0.2% |
| 14 to 17 | 6.0% | 6.7% | 6.8% | 1.9% | 1.5% |
| 18 to 21 | 7.3% | 6.7% | 6.0% | 0.0% | 2.2% |
| 22 to 54 | 46.7% | 44.8% | 42.6% | 0.3% | 0.8% |
| 55 to 59 | 3.8% | 4.5% | 4.4% | 2.6% | 2.8% |
| 60 to 74 | 7.2% | 8.2% | 10.2% | 2.1% | 4.2% |
| 75 and up | 3.8% | 3.8% | 6.8% | 0.7% | 3.1% |
| Housing Units | 33,493 | 37,623 | 37,994 | 1.2% | 0.1% |
| Occupied | 93.9% | 84.7% | 92.7% | 0.1% | 1.4% |
| Vacant | 6.1% | 15.3% | 7.3% | 10.8% | -9.9% |
| Households | 31,435 | 31,884 | 35,220 | 0.1% | 1.4% |
| 15 to 24 | 9.8% | 7.6% | 5.7% | -2.4% | 1.3% |
| 25 to 34 | 44.6% 22.2% | 40.4% 19.3% | 36.1% 16.0% | -1.2% | -1.1% |
| 35 to 44 | 22.4% | 21.1% | 20.1% | -0.4% | 0.4% |
| 45 to 54 | 17.7% | 21.2% | 21.4% | 2.0% | 2.3% |
| 55 to 64 | 11.6% | 14.7% | 14.6% | 2.6% | 3.6% |
| 65 to 74 | 8.7% | 8.7% | 10.7% | 0.1% | 2.8% |
| Over 75 | 7.5% | 7.4% | 11.6% | 0.1% | 1.7% |
| Population Per | 2.88 | 3.06 | 3.02 | 6.3% | -0.2% |

Large population increase in the 2000's, with slow growth since 2010

Most age groups increased proportionally during the boom, while the younger groups have lagged during the bust and recovery

Recent changes in the age profile of households is weighted toward older cohorts

Sources: U.S. Bureau of the Census, 1990, 2000 and 2010;
American Community Survey; 2016; Applied Economics, 2018.

* Compound annual rate of change.

Charter School Enrollment

| Year | #Schools | KG | 1st | 2nd | 3rd | 4th | 5th | 6th | 7th | 8th | Total | Change |
|--------------------|----------|-----|-----|-----|-----|-----|-----|-----|-----|-----|-------|--------|
| In District | | | | | | | | | | | | |
| 2010-11 | 1 | 82 | 64 | 70 | 51 | 55 | 40 | 54 | 25 | - | 441 | 38 |
| 2011-12 | 1 | 77 | 76 | 74 | 70 | 57 | 52 | 44 | 53 | 27 | 530 | 89 |
| 2012-13 | 1 | 75 | 62 | 75 | 74 | 68 | 49 | 43 | 39 | 41 | 526 | (4) |
| 2013-14 | 1 | 69 | 70 | 68 | 62 | 68 | 59 | 46 | 36 | 36 | 514 | (12) |
| 2014-15 | 1 | 68 | 73 | 71 | 72 | 59 | 62 | 51 | 41 | 33 | 530 | 16 |
| 2015-16 | 2 | 116 | 82 | 83 | 80 | 69 | 59 | 59 | 42 | 39 | 629 | 99 |
| 2016-17 | 3 | 94 | 113 | 88 | 94 | 97 | 96 | 84 | 73 | 52 | 791 | 162 |
| 2017-18 | 3 | 122 | 103 | 133 | 96 | 121 | 116 | 113 | 106 | 89 | 999 | 208 |
| Nearby | | | | | | | | | | | | |
| 2010-11 | 5 | 170 | 162 | 154 | 157 | 158 | 144 | 142 | 283 | 257 | 1,627 | 100 |
| 2011-12 | 5 | 193 | 174 | 177 | 157 | 169 | 161 | 163 | 309 | 287 | 1,790 | 163 |
| 2012-13 | 5 | 171 | 178 | 175 | 167 | 149 | 156 | 154 | 331 | 312 | 1,793 | 3 |
| 2013-14 | 5 | 183 | 180 | 165 | 153 | 158 | 163 | 157 | 316 | 324 | 1,799 | 6 |
| 2014-15 | 6 | 186 | 190 | 176 | 167 | 139 | 177 | 159 | 308 | 321 | 1,823 | 24 |
| 2015-16 | 7 | 309 | 225 | 242 | 212 | 224 | 183 | 212 | 320 | 333 | 2,260 | 437 |
| 2016-17 | 7 | 291 | 297 | 251 | 247 | 225 | 232 | 220 | 372 | 312 | 2,447 | 187 |
| 2017-18 | 7 | 284 | 316 | 306 | 273 | 312 | 253 | 295 | 407 | 379 | 2,825 | 378 |
| Total | | | | | | | | | | | | |
| 2010-11 | 6 | 252 | 226 | 224 | 208 | 213 | 184 | 196 | 308 | 257 | 2,068 | 138 |
| 2011-12 | 6 | 270 | 250 | 251 | 227 | 226 | 213 | 207 | 362 | 314 | 2,320 | 252 |
| 2012-13 | 6 | 246 | 240 | 250 | 241 | 217 | 205 | 197 | 370 | 353 | 2,319 | (1) |
| 2013-14 | 6 | 252 | 250 | 233 | 215 | 226 | 222 | 203 | 352 | 360 | 2,313 | (6) |
| 2014-15 | 7 | 254 | 263 | 247 | 239 | 198 | 239 | 210 | 349 | 354 | 2,353 | 40 |
| 2015-16 | 9 | 425 | 307 | 325 | 292 | 293 | 242 | 271 | 362 | 372 | 2,889 | 536 |
| 2016-17 | 10 | 385 | 410 | 339 | 341 | 322 | 328 | 304 | 445 | 364 | 3,238 | 349 |
| 2017-18 | 10 | 406 | 419 | 439 | 369 | 433 | 369 | 408 | 513 | 468 | 3,824 | 586 |

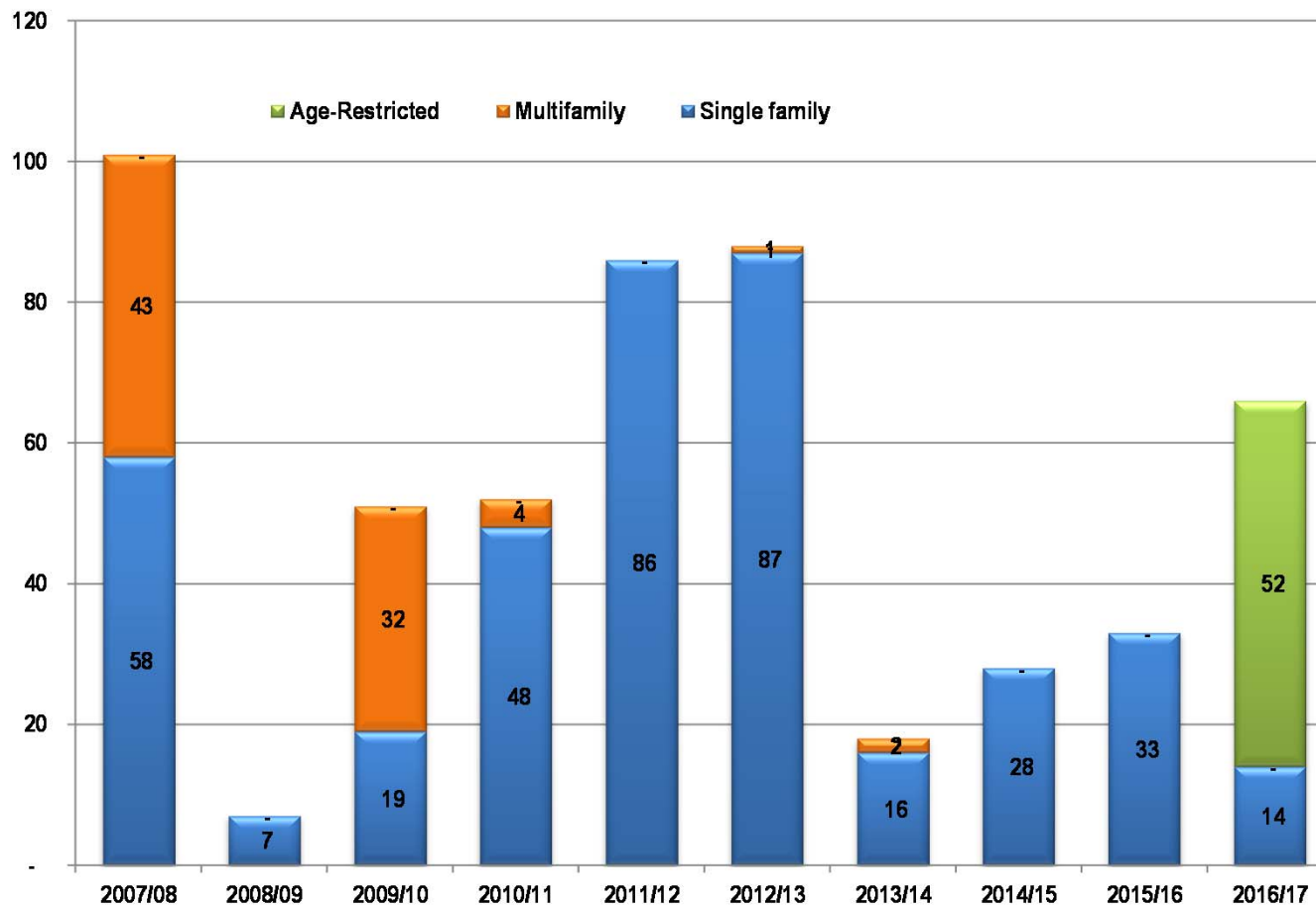
Source: Arizona Department of Education; Applied Economics, 2017.

Back in 2010/11 charter schools enrolled about 2,070 students, or about 13.3% of the school-age population

In 2017/18 charter schools enroll about 3,820 students, or about 24.3% of the school-age population

Residential Development

Permitted Housing Units by Type



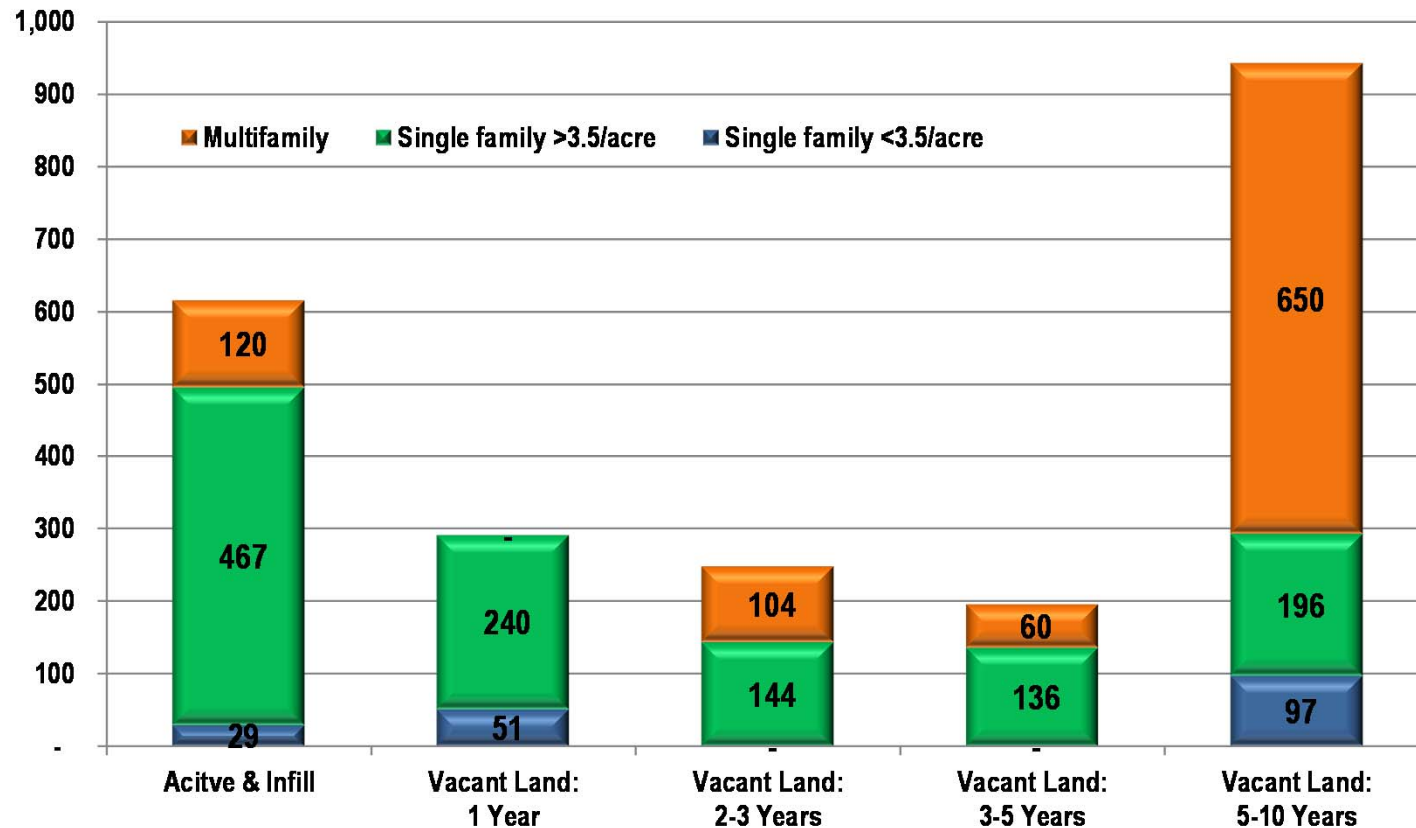
530 new housing units permitted in the last 10 years (1.3% of inventory)

Activity has been very irregular with no major single family projects underway, and only sporadic multifamily additions

Increase in activity expected over the next three to four years

Residential Potential

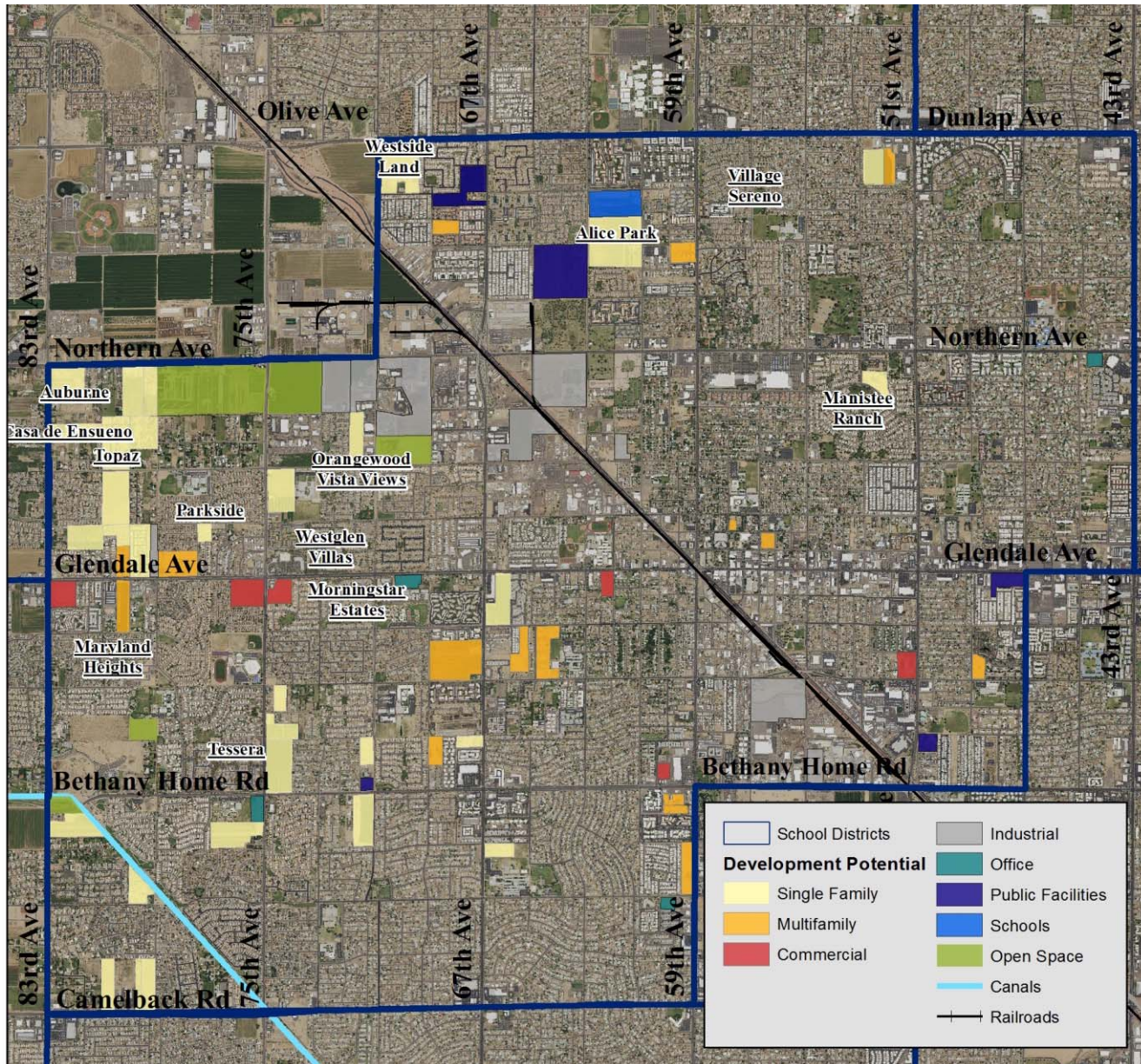
Housing Units by Type and Timeline for Development



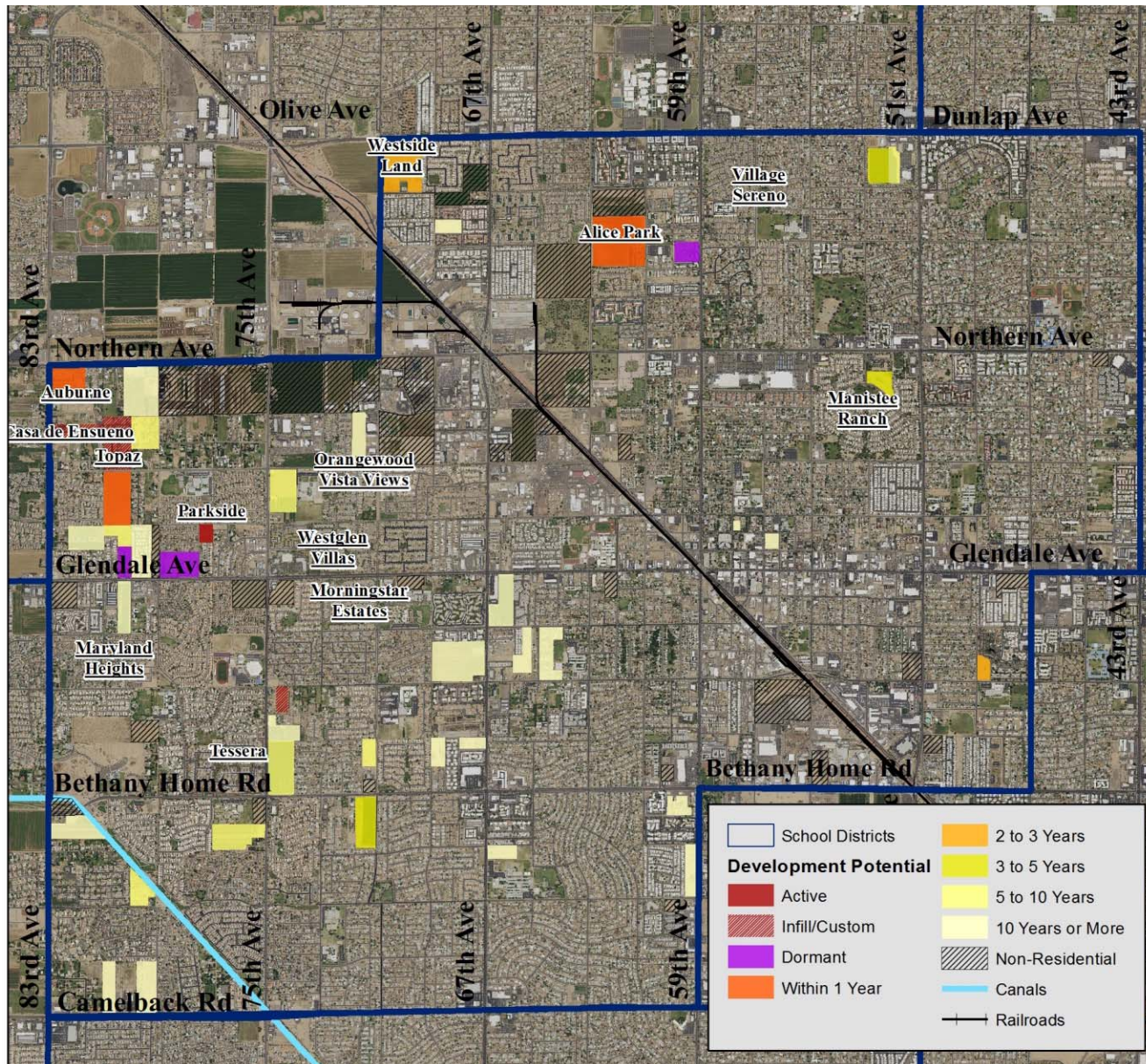
Potential for about 4,500 additional housing units in active/infill projects and those that could begin construction over the next 10 years

Most of the long term potential is for multifamily development

Development Potential



Development Timing



Demographic Projections

| Year | Population | Total Units | New Units | | | Occ Rate | Households | Pop/HH |
|-----------------|------------|-------------|-----------|---------------|--------------|----------|------------|--------|
| | | | Total | Single Family | Multi-family | | | |
| 2007/08 | 103,924 | 37,464 | 207 | 138 | 69 | 92.0% | 34,467 | 3.015 |
| 2008/09 | 101,490 | 37,565 | 101 | 58 | 43 | 89.0% | 33,433 | 3.036 |
| 2009/10 | 99,349 | 37,572 | 7 | 7 | 0 | 86.5% | 32,500 | 3.057 |
| 2010/11 | 97,573 | 37,623 | 51 | 19 | 32 | 84.7% | 31,884 | 3.060 |
| 2011/12 | 100,890 | 37,675 | 52 | 48 | 4 | 87.5% | 32,966 | 3.060 |
| 2012/13 | 100,560 | 37,761 | 86 | 86 | 0 | 87.0% | 32,852 | 3.061 |
| 2013/14 | 101,971 | 37,849 | 88 | 87 | 1 | 88.0% | 33,307 | 3.062 |
| 2014/15 | 105,182 | 37,867 | 18 | 16 | 2 | 91.0% | 34,459 | 3.052 |
| 2015/16 | 106,681 | 37,895 | 28 | 28 | 0 | 92.5% | 35,053 | 3.043 |
| 2016/17 | 106,577 | 37,928 | 33 | 33 | 0 | 92.6% | 35,121 | 3.035 |
| 2017/18 | 106,516 | 37,994 | 66 | 14 | 52 | 92.7% | 35,220 | 3.024 |
| 2018/19 | 106,559 | 38,075 | 81 | 81 | 0 | 92.8% | 35,334 | 3.016 |
| 2019/20 | 106,774 | 38,212 | 137 | 137 | 0 | 92.9% | 35,499 | 3.008 |
| 2020/21 | 106,912 | 38,332 | 120 | 98 | 22 | 93.0% | 35,649 | 2.999 |
| 2021/22 | 107,061 | 38,497 | 165 | 133 | 32 | 93.0% | 35,802 | 2.990 |
| 2022/23 | 107,023 | 38,595 | 98 | 82 | 16 | 93.0% | 35,893 | 2.982 |
| 2023/24 | 107,084 | 38,689 | 94 | 82 | 12 | 93.0% | 35,981 | 2.976 |
| 2024/25 | 107,102 | 38,779 | 90 | 50 | 40 | 93.0% | 36,064 | 2.970 |
| 2025/26 | 107,273 | 38,936 | 157 | 71 | 86 | 93.0% | 36,210 | 2.962 |
| 2026/27 | 107,305 | 39,019 | 83 | 75 | 8 | 93.0% | 36,288 | 2.957 |
| 2027/28 | 107,341 | 39,106 | 87 | 73 | 14 | 93.0% | 36,369 | 2.951 |
| 2017/18-2022/23 | | | 601 | 531 | 70 | | 673 | |
| 2022/23-2027/28 | | | 511 | 351 | 160 | | 475 | |

Source: Applied Economics, 2017.

Bolding indicates actuals.

Housing additions likely to increase slowly over the next 3 or 4 years, then moderate

Population per household expected to decline slightly

School-Age Pop. & Enrollment

| Year | Households | School-Age Population * | | K-8 Enrollment | | Net Difference | Enrollment - Population Ratio |
|---------|------------|-------------------------|---------------|----------------|---------------|----------------|-------------------------------|
| | | Total | Per Household | Total | Per Household | | |
| 2007/08 | 34,467 | 16,318 | 0.473 | 13,846 | 0.402 | 2,472 | 84.8% |
| 2008/09 | 33,433 | 15,972 | 0.478 | 13,326 | 0.399 | 2,646 | 83.4% |
| 2009/10 | 32,500 | 15,667 | 0.482 | 13,027 | 0.401 | 2,640 | 83.2% |
| 2010/11 | 31,884 | 15,509 | 0.486 | 12,704 | 0.398 | 2,805 | 81.9% |
| 2011/12 | 32,966 | 16,219 | 0.492 | 13,193 | 0.400 | 3,026 | 81.3% |
| 2012/13 | 32,852 | 16,459 | 0.501 | 13,288 | 0.404 | 3,171 | 80.7% |
| 2013/14 | 33,307 | 16,853 | 0.506 | 13,573 | 0.408 | 3,280 | 80.5% |
| 2014/15 | 34,459 | 16,901 | 0.490 | 13,527 | 0.393 | 3,374 | 80.0% |
| 2015/16 | 35,053 | 16,498 | 0.471 | 13,217 | 0.377 | 3,281 | 80.1% |
| 2016/17 | 35,121 | 16,183 | 0.461 | 13,038 | 0.371 | 3,145 | 80.6% |
| 2017/18 | 35,220 | 15,732 | 0.447 | 12,559 | 0.357 | 3,173 | 79.8% |
| 2018/19 | 35,334 | 15,522 | 0.439 | 12,301 | 0.348 | 3,221 | 79.3% |
| 2019/20 | 35,499 | 15,336 | 0.432 | 12,079 | 0.340 | 3,257 | 78.8% |
| 2020/21 | 35,649 | 15,146 | 0.425 | 11,822 | 0.332 | 3,324 | 78.1% |
| 2021/22 | 35,802 | 14,960 | 0.418 | 11,632 | 0.325 | 3,328 | 77.8% |
| 2022/23 | 35,893 | 14,750 | 0.411 | 11,368 | 0.317 | 3,382 | 77.1% |
| 2023/24 | 35,981 | 14,808 | 0.412 | 11,249 | 0.313 | 3,559 | 76.0% |
| 2024/25 | 36,064 | 14,864 | 0.412 | 11,299 | 0.313 | 3,565 | 76.0% |
| 2025/26 | 36,210 | 14,947 | 0.413 | 11,297 | 0.312 | 3,650 | 75.6% |
| 2026/27 | 36,288 | 15,001 | 0.413 | 11,311 | 0.312 | 3,690 | 75.4% |
| 2027/28 | 36,369 | 15,057 | 0.414 | 11,324 | 0.311 | 3,733 | 75.2% |

Source: Applied Economics, 2017.

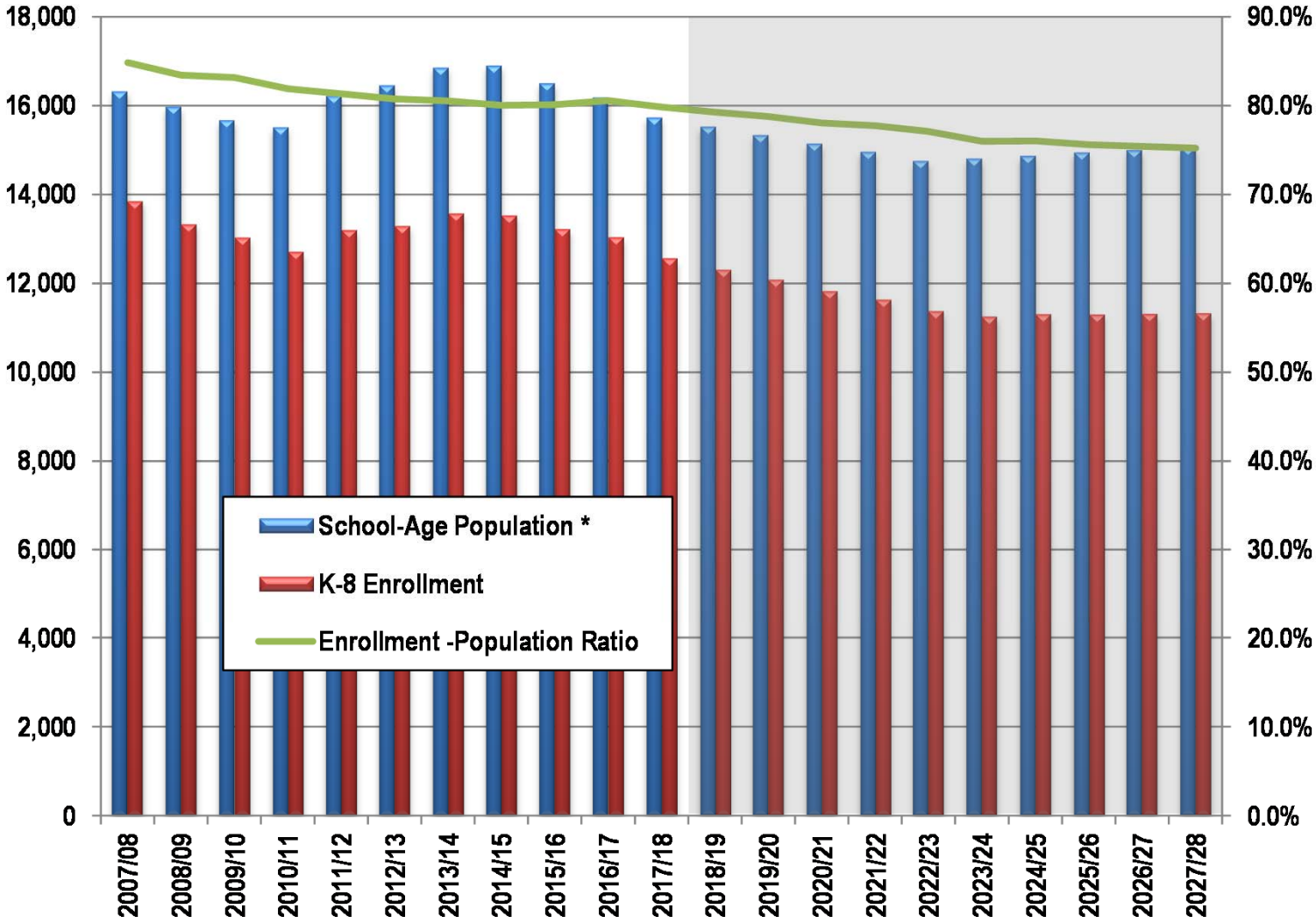
* Population age 5 through 13, corresponds with Kindergarten through 8th grade.

Bolding Indicates Actuals

The current net difference between school-age population and enrollment is 3,173 persons, including an offset of 548 students from outside the District, resulting in an enrollment-population ratio of 79.8%

Based on trends over the past 10 years, the enrollment-population ratio is likely to decline to 75.2% by 2027/28

School-Age Pop. & Enrollment



Projected Enrollment by Cohort

| Year | Enrollment by Level | | K-8 Enrollment | Percent Change | Share of Enrollment | |
|---------|---------------------|-------|----------------|----------------|---------------------|-------|
| | K-3 | 4-8 | | | K-3 | 4-8 |
| 2007/08 | 6,542 | 7,304 | 13,846 | -0.6% | 47.2% | 52.8% |
| 2008/09 | 6,332 | 6,994 | 13,326 | -3.8% | 47.5% | 52.5% |
| 2009/10 | 6,129 | 6,898 | 13,027 | -2.2% | 47.0% | 53.0% |
| 2010/11 | 5,939 | 6,765 | 12,704 | -2.5% | 46.7% | 53.3% |
| 2011/12 | 6,207 | 6,986 | 13,193 | 3.8% | 47.0% | 53.0% |
| 2012/13 | 6,287 | 7,001 | 13,288 | 0.7% | 47.3% | 52.7% |
| 2013/14 | 6,326 | 7,247 | 13,573 | 2.1% | 46.6% | 53.4% |
| 2014/15 | 6,204 | 7,323 | 13,527 | -0.3% | 45.9% | 54.1% |
| 2015/16 | 5,913 | 7,304 | 13,217 | -2.3% | 44.7% | 55.3% |
| 2016/17 | 5,696 | 7,342 | 13,038 | -1.4% | 43.7% | 56.3% |
| 2017/18 | 5,259 | 7,300 | 12,559 | -3.7% | 41.9% | 58.1% |
| 2018/19 | 5,101 | 7,200 | 12,301 | -2.1% | 41.5% | 58.5% |
| 2019/20 | 5,078 | 7,001 | 12,079 | -1.8% | 42.0% | 58.0% |
| 2020/21 | 4,968 | 6,854 | 11,822 | -2.1% | 42.0% | 58.0% |
| 2021/22 | 4,934 | 6,698 | 11,632 | -1.6% | 42.4% | 57.6% |
| 2022/23 | 4,922 | 6,446 | 11,368 | -2.3% | 43.3% | 56.7% |
| 2023/24 | 4,957 | 6,292 | 11,249 | -1.0% | 44.1% | 55.9% |
| 2024/25 | 5,042 | 6,257 | 11,299 | 0.4% | 44.6% | 55.4% |
| 2025/26 | 5,127 | 6,170 | 11,297 | 0.0% | 45.4% | 54.6% |
| 2026/27 | 5,185 | 6,126 | 11,311 | 0.1% | 45.8% | 54.2% |
| 2027/28 | 5,228 | 6,096 | 11,324 | 0.1% | 46.2% | 53.8% |

Source: Applied Economics, 2017.

Bolding Indicates Actuals.

K-8 enrollment projected to decline through at least 2023/24

Long term increases possible based on turnover of existing households, residential construction, and characteristics of households entering the District

School Attendance Patterns

KINDERGARTEN THROUGH 3RD GRADE

| School/Code | Attendance Area | | | | | | | | | | | | | | | Out of District | Total Attend | Total Reside | Net Difference |
|--------------------|-----------------|-----|-----|-----|-----|-----|-----|-----|-----|-----|-----|-----|-----|-----|-----|-----------------|--------------|--------------|----------------|
| | 101 | 102 | 103 | 104 | 105 | 107 | 108 | 110 | 112 | 113 | 114 | 115 | 116 | 117 | | | | | |
| Landmark | 101 | 304 | 1 | 5 | 1 | 1 | 5 | 3 | | | | | 1 | 1 | 11 | 334 | 330 | 4 | |
| Imes | 102 | 2 | 220 | | | | 2 | 1 | | | | | 2 | 2 | 9 | 238 | 240 | -2 | |
| Smith | 103 | 1 | 5 | 304 | | 4 | | | 1 | | 9 | | 6 | | 13 | 343 | 332 | 11 | |
| Sine | 104 | | 3 | | 239 | 1 | 13 | 1 | | | 1 | | 3 | | 4 | 265 | 257 | 8 | |
| Jack | 105 | | 2 | 5 | | 657 | | 1 | 2 | 1 | 4 | | 3 | | 17 | 692 | 693 | -1 | |
| Burton | 107 | | 1 | | 4 | 2 | 250 | | 3 | | 1 | | | 1 | 17 | 279 | 269 | 10 | |
| American | 108 | 8 | | 1 | 4 | 5 | | 260 | 5 | | | | | | 11 | 294 | 275 | 19 | |
| Horizon | 110 | 4 | 2 | | 9 | 1 | 1 | 5 | 278 | 1 | 1 | | | 1 | 22 | 325 | 293 | 32 | |
| Bicentennial South | 112 | 2 | | | | 2 | | | 478 | | 10 | 1 | 2 | | 20 | 515 | 514 | 1 | |
| Discovery | 113 | 2 | | | | 1 | | | 6 | 250 | 4 | 5 | 2 | 1 | 17 | 288 | 264 | 24 | |
| Desert Garden | 114 | 2 | | 5 | | 8 | | | 5 | | 619 | | 6 | 3 | 8 | 656 | 676 | -20 | |
| Coyote Ridge | 115 | | 1 | 5 | | 5 | | | 18 | 4 | 13 | 215 | 5 | 4 | 42 | 312 | 226 | 86 | |
| Desert Spirit | 116 | 1 | 3 | 1 | | 4 | | 1 | 1 | 1 | 2 | 6 | 1 | 292 | 1 | 9 | 323 | -15 | |
| Sunset Vista | 117 | 1 | 2 | 3 | | 2 | | 2 | 2 | 5 | 5 | 2 | 14 | 323 | 14 | 375 | 335 | 40 | |
| Other | | 3 | 0 | 3 | 0 | 0 | 2 | 2 | 0 | 0 | 1 | 4 | 0 | 2 | 0 | 3 | 20 | 0 | 20 |
| Reside Total | | 330 | 240 | 332 | 257 | 693 | 269 | 275 | 293 | 514 | 264 | 676 | 226 | 338 | 335 | 217 | 5,259 | 5,042 | 217 |

Attend=Reside 4,689 93.0%

4TH THROUGH 8TH GRADE

| School/Code | Attendance Area | | | | | | | | | | | | | | | Out of District | Total Attend | Total Reside | Net Difference |
|--------------------|-----------------|-----|-----|-----|-----|-----|-----|-----|-----|-----|-----|-----|-----|-----|-----|-----------------|--------------|--------------|----------------|
| | 101 | 102 | 103 | 104 | 106 | 107 | 108 | 110 | 109 | 113 | 111 | 115 | 116 | 117 | | | | | |
| Landmark | 101 | 381 | 5 | 8 | 3 | 1 | 2 | 5 | 2 | | 1 | 4 | | 3 | 2 | 17 | 434 | 427 | 7 |
| Imes | 102 | 1 | 261 | | | 1 | 2 | 1 | | | | 1 | 1 | 1 | | 9 | 278 | 288 | -10 |
| Smith | 103 | 2 | 2 | 404 | | 14 | | | 6 | | 20 | 1 | 5 | | 14 | 468 | 439 | 29 | |
| Sine | 104 | 5 | 4 | | 325 | 1 | 8 | | 2 | | | | 3 | | 13 | 361 | 352 | 9 | |
| Mensendick | 106 | | 1 | 2 | 1 | 864 | | | 9 | 1 | 9 | 1 | 2 | 1 | 26 | 917 | 936 | -19 | |
| Burton | 107 | 1 | 3 | | 2 | 2 | 349 | 3 | | | 2 | | | 2 | 30 | 394 | 380 | 14 | |
| American | 108 | 7 | 2 | 4 | 3 | 5 | 8 | 349 | 9 | 1 | | 5 | | | 12 | 405 | 375 | 30 | |
| Horizon | 110 | 12 | | | 15 | 2 | 7 | 13 | 437 | | 2 | 2 | | 2 | 37 | 529 | 457 | 72 | |
| Bicentennial North | 109 | 2 | 1 | 1 | 1 | 6 | | | 1 | 749 | | 8 | | 1 | 4 | 15 | 789 | 831 | -42 |
| Discovery | 113 | 2 | | 2 | | 3 | | | 20 | 341 | 10 | 10 | 1 | 7 | 46 | 442 | 369 | 73 | |
| Challenger | 111 | 2 | | 5 | | 7 | | 3 | 6 | | 689 | 1 | 6 | | 15 | 734 | 811 | -77 | |
| Coyote Ridge | 115 | 1 | 4 | 1 | | 8 | 1 | | 21 | 9 | 17 | 311 | 9 | 8 | 51 | 441 | 328 | 113 | |
| Desert Spirit | 116 | 1 | 2 | 5 | | 11 | 1 | 2 | 2 | 13 | 10 | 24 | 1 | 479 | 4 | 18 | 573 | 532 | 41 |
| Sunset Vista | 117 | 4 | 1 | 4 | | 5 | | 1 | 3 | 3 | 1 | 12 | 1 | 18 | 414 | 24 | 491 | 444 | 47 |
| Other | | 6 | 2 | 3 | 2 | 6 | 2 | 1 | 0 | 1 | 4 | 8 | 1 | 2 | 2 | 4 | 44 | 0 | 44 |
| Reside Total | | 427 | 288 | 439 | 352 | 936 | 380 | 375 | 457 | 831 | 369 | 811 | 328 | 532 | 444 | 331 | 7,300 | 6,969 | 331 |

Attend=Reside 6,353 91.2%

Attendance Area Projections

| Attendance Area | Actual | | | | Projected | | | | | | | | | | Change | | | |
|--------------------|---------|---------|---------|---------|-----------|---------|---------|---------|---------|---------|---------|---------|---------|---------|---------|--------|---------|---------|
| | 2010/11 | 2015/16 | 2016/17 | 2017/18 | 2018/19 | 2019/20 | 2020/21 | 2021/22 | 2022/23 | 2023/24 | 2024/25 | 2025/26 | 2026/27 | 2027/28 | '10-'17 | 15-'17 | '17-'22 | '22-'27 |
| American | 678 | 694 | 655 | 650 | 672 | 719 | 702 | 683 | 660 | 660 | 674 | 682 | 668 | 656 | -28 | -44 | 10 | -4 |
| Bicentennial South | 607 | 580 | 571 | 514 | 498 | 498 | 492 | 503 | 511 | 526 | 543 | 560 | 574 | 586 | -93 | -66 | -3 | 74 |
| Bicentennial North | 743 | 807 | 817 | 831 | 812 | 768 | 719 | 692 | 680 | 670 | 671 | 668 | 680 | 685 | 88 | 24 | -151 | 5 |
| Burton | 619 | 712 | 667 | 649 | 629 | 615 | 589 | 591 | 575 | 577 | 569 | 572 | 563 | 562 | 30 | -63 | -74 | -13 |
| Coyote Ridge | 796 | 567 | 596 | 554 | 540 | 524 | 504 | 491 | 483 | 475 | 487 | 499 | 504 | 514 | -242 | -13 | -71 | 31 |
| Desert Garden | 718 | 740 | 708 | 676 | 662 | 642 | 631 | 620 | 621 | 629 | 647 | 660 | 667 | 673 | -42 | -64 | -55 | 51 |
| Challenger | 792 | 766 | 769 | 811 | 810 | 815 | 833 | 826 | 814 | 809 | 803 | 794 | 783 | 782 | 19 | 45 | 3 | -33 |
| Desert Spirit | 759 | 854 | 888 | 870 | 846 | 816 | 790 | 752 | 710 | 692 | 699 | 706 | 724 | 736 | 111 | 16 | -160 | 27 |
| Discovery | 626 | 672 | 648 | 633 | 598 | 580 | 574 | 541 | 538 | 523 | 515 | 514 | 513 | 511 | 7 | -39 | -95 | -28 |
| Horizon | 723 | 748 | 762 | 750 | 722 | 697 | 669 | 641 | 632 | 630 | 632 | 625 | 630 | 629 | 27 | 2 | -118 | -3 |
| Imes | 482 | 500 | 521 | 528 | 529 | 515 | 505 | 491 | 493 | 478 | 480 | 477 | 473 | 473 | 46 | 28 | -35 | -20 |
| Landmark | 678 | 726 | 672 | 714 | 707 | 678 | 667 | 652 | 640 | 624 | 618 | 608 | 613 | 610 | 36 | -12 | -74 | -29 |
| Jack | 815 | 757 | 758 | 693 | 679 | 677 | 655 | 647 | 644 | 649 | 660 | 668 | 675 | 680 | -122 | -64 | -49 | 35 |
| Mensendick | 857 | 1,012 | 938 | 936 | 913 | 887 | 876 | 883 | 842 | 826 | 826 | 807 | 799 | 793 | 79 | -76 | -94 | -48 |
| Sine | 665 | 653 | 699 | 609 | 601 | 602 | 591 | 580 | 557 | 555 | 562 | 561 | 557 | 557 | -56 | -44 | -52 | 0 |
| Smith | 893 | 883 | 875 | 814 | 796 | 788 | 762 | 737 | 716 | 702 | 711 | 694 | 684 | 678 | -79 | -69 | -98 | -38 |
| Sunset Vista | 764 | 846 | 773 | 779 | 759 | 739 | 767 | 822 | 792 | 773 | 759 | 750 | 755 | 754 | 15 | -67 | 13 | -38 |
| Out of District | 489 | 700 | 721 | 548 | 526 | 520 | 497 | 481 | 458 | 450 | 442 | 450 | 448 | 445 | 59 | -152 | -90 | -13 |
| TOTAL | 12,704 | 13,217 | 13,038 | 12,559 | 12,301 | 12,079 | 11,822 | 11,632 | 11,368 | 11,249 | 11,299 | 11,297 | 11,311 | 11,324 | -145 | -658 | -1,191 | -44 |

Source: Applied Economics, 2017.

Enrollment loss of about 1,200 students over the next 10 years, much of which is due to the current distribution of enrollment by grade and low recession-era birth rates

Only the American Bicentennial South attendance area is projected to show an enrollment increase over the next 10 years

School Projections

| School | Net Difference* | | | Actual | | | | Projected | | | | | | | | | Change | |
|--------------------|-----------------|------------|------------|---------------|---------------|---------------|---------------|---------------|---------------|---------------|---------------|---------------|---------------|---------------|---------------|---------------|---------------|------------|
| | 2015/16 | 2016/17 | 2017/18 | 2015/16 | 2016/17 | 2017/18 | 2018/19 | 2019/20 | 2020/21 | 2021/22 | 2022/23 | 2023/24 | 2024/25 | 2025/26 | 2026/27 | 2027/28 | '17-'22 | '22-'27 |
| American | 85 | 57 | 49 | 779 | 712 | 699 | 720 | 766 | 748 | 728 | 704 | 703 | 716 | 725 | 711 | 699 | 5 | -5 |
| Bicentennial South | 6 | -8 | 1 | 586 | 563 | 515 | 498 | 498 | 491 | 501 | 509 | 523 | 539 | 557 | 571 | 582 | -6 | 73 |
| Bicentennial North | -10 | -19 | -39 | 797 | 798 | 792 | 771 | 727 | 677 | 650 | 636 | 626 | 626 | 623 | 636 | 640 | -156 | 4 |
| Burton | 55 | 65 | 24 | 767 | 732 | 673 | 652 | 637 | 611 | 612 | 595 | 596 | 588 | 591 | 582 | 581 | -78 | -14 |
| Coyote Ridge | 240 | 222 | 199 | 807 | 818 | 753 | 738 | 721 | 700 | 686 | 677 | 668 | 680 | 693 | 697 | 707 | -76 | 30 |
| Desert Garden | -34 | 21 | -20 | 706 | 729 | 656 | 641 | 621 | 608 | 597 | 597 | 604 | 621 | 635 | 642 | 647 | -59 | 50 |
| Challenger | -133 | -92 | -77 | 633 | 677 | 734 | 731 | 737 | 753 | 745 | 732 | 726 | 720 | 712 | 700 | 699 | -2 | -33 |
| Desert Spirit | 56 | 19 | 26 | 910 | 907 | 896 | 870 | 840 | 813 | 773 | 730 | 712 | 719 | 726 | 744 | 756 | -166 | 26 |
| Discovery | 94 | 94 | 97 | 766 | 742 | 730 | 694 | 675 | 668 | 635 | 631 | 615 | 607 | 606 | 605 | 602 | -99 | -29 |
| Horizon | 116 | 83 | 104 | 864 | 845 | 854 | 825 | 800 | 770 | 741 | 731 | 728 | 730 | 723 | 728 | 727 | -123 | -4 |
| Imes | 6 | -18 | -12 | 506 | 503 | 516 | 517 | 502 | 491 | 476 | 477 | 463 | 464 | 461 | 457 | 457 | -39 | -20 |
| Landmark | 79 | 61 | 54 | 805 | 733 | 768 | 760 | 731 | 718 | 702 | 688 | 673 | 666 | 657 | 662 | 658 | -80 | -30 |
| Jack | 19 | 2 | -1 | 776 | 760 | 692 | 677 | 674 | 651 | 643 | 639 | 643 | 653 | 662 | 668 | 673 | -53 | 34 |
| Mensendick | -35 | -4 | -19 | 977 | 934 | 917 | 893 | 866 | 854 | 859 | 816 | 800 | 800 | 782 | 774 | 768 | -101 | -48 |
| Sine | 21 | 51 | 17 | 674 | 750 | 626 | 617 | 618 | 605 | 594 | 570 | 568 | 574 | 573 | 570 | 569 | -56 | -1 |
| Smith | -22 | 41 | -3 | 861 | 916 | 811 | 792 | 783 | 756 | 730 | 708 | 693 | 702 | 686 | 674 | 670 | -103 | -38 |
| Sunset Vista | 98 | 94 | 87 | 944 | 867 | 866 | 845 | 824 | 851 | 904 | 873 | 853 | 839 | 830 | 835 | 834 | 7 | -39 |
| Other | 59 | 52 | 61 | 59 | 52 | 61 | 60 | 59 | 57 | 56 | 55 | 55 | 55 | 55 | 55 | 55 | -6 | 0 |
| TOTAL | 700 | 721 | 548 | 13,217 | 13,038 | 12,559 | 12,301 | 12,079 | 11,822 | 11,632 | 11,368 | 11,249 | 11,299 | 11,297 | 11,311 | 11,324 | -1,191 | -44 |

Source: Applied Economics, 2017.

* Difference between enrollment in the attendance area and enrollment at the school.

The differences between enrollment by attendance area and enrollment by school show a great deal of consistency over time

All but one or two schools are likely to experience declining enrollment over the next five years with more stable conditions after that

Conclusions

The school-age population of the District is falling, and enrollment in charter schools is increasing, resulting in steady declines in District enrollment that are likely to persist

The amount of current residential construction, and the potential for new residential development in the future is not sufficient to offset the factors reducing enrollment

Future enrollment is likely to be impacted by additional charter schools, or the expansion of existing ones, so marketing and program choice will continue to be important to the District

The community is well-positioned for increased redevelopment activity in the future, but the impact of this activity may not have an impact on the school-age population

GLENDALE ELEMENTARY SCHOOL DISTRICT

ACTION AGENDA ITEM

AGENDA NO: 5.A. TOPIC: Fundraiser Activity Requests

SUBMITTED BY: Various Schools

RECOMMENDED BY: Mr. Mike Barragan, Assistant Superintendent for Finance & Auxiliary Services

DATE ASSIGNED FOR CONSIDERATION: January 25, 2018

RECOMMENDATION:

It is recommended the Governing Board approve and ratify the fundraising activity requests as presented.

RATIONALE:

| <u>School</u> | <u>Event</u> | <u>Purpose</u> |
|----------------|--------------------------------------|--|
| Isaac E. Imes | Family Piñata Party | Raising funds for PTO |
| Melvin E. Sine | DO Parking Lot for Glendale Glitters | Raising funds for field trips and other school functions |
| Melvin E. Sine | Selling snacks at School Dance | Raising funds for field trips and other school functions |

Source of Funding -

M & O Budget _____ State Grant _____ Federal Grant _____ Capital _____ Other _____

GLENDALE ELEMENTARY SCHOOL DISTRICT

ACTION AGENDA ITEM

AGENDA NO: 5.B. TOPIC: Certified Contract Renewals

SUBMITTED BY: Dr. Barbara Goodwin, Assistant Superintendent for Human Resources

RECOMMENDED BY: Dr. Barbara Goodwin, Assistant Superintendent for Human Resources

DATE ASSIGNED FOR CONSIDERATION: January 25, 2018

RECOMMENDATION:

It is recommended the Governing Board approve the renewal of certified staff (non-administrative) employment contracts for the 2018-2019 school year.

RATIONALE:

Administration recommends renewal of the contracts for certified staff identified on the attached list for the 2018-2019 school year.

Once contracts are distributed, staff will have 15 to 30 days as specified within their contract to sign and return.

The evaluation process for some certified teachers has not yet concluded. Administration may recommend the non-renewal of individual certified staff members upon conclusion of the process.

Please note: The attached list referred to above will be provided in a revised agenda upon completion.

GLENDALE ELEMENTARY SCHOOL DISTRICT
ACTION AGENDA ITEM

AGENDA NO: 5.C. TOPIC: Certified Personnel Report

SUBMITTED BY: Ms. Cathey Mayes, Director of Human Resources

RECOMMENDED BY: Dr. Barbara Goodwin, Assistant Superintendent for Human Resources

DATE ASSIGNED FOR CONSIDERATION: January 25, 2018

RECOMMENDATION:

It is recommended the Governing Board approve the employments, resignations, retirements, promotions, leaves of absence, cancellations of employment, terminations, and/or contract renewals of certified personnel.

New Employment

| | | | |
|------------------------|---------|----------|----------|
| 1. Castaneda, Teresa | Teacher | \$36,000 | 01/18/18 |
| 2. Estes, Bryan | Teacher | \$36,000 | 01/18/18 |
| 3. Gorman, Michael | Teacher | \$36,000 | 01/18/18 |
| 4. McCutcheon, Javelin | Teacher | \$36,000 | 01/18/18 |
| 5. Bandura, Brady | Teacher | \$36,000 | 01/16/18 |

Resignation

| | | | |
|---------------------|---------|----------|----------|
| 1. Kinzler, Andrea* | Teacher | Personal | 01/12/18 |
|---------------------|---------|----------|----------|

*Liquidated damages fee assessed per contract

Guest Teacher - New Hire

| | | | |
|---------------------------|---------------|--|----------|
| 1. Gallimore, Jeffrey Jr. | Guest Teacher | | 01/22/18 |
|---------------------------|---------------|--|----------|

Leave of Absence

| | | | |
|---------------------|---------|--|-------------------|
| 1. Willemot, Amanda | Teacher | | 01/10/18-05/25/18 |
|---------------------|---------|--|-------------------|

Qualified Evaluator

| | | | |
|------------------|-----------------------------|--|----------|
| 1. Ashby, Alicia | Interim Assistant Principal | | 01/18/18 |
|------------------|-----------------------------|--|----------|

GLENDALE ELEMENTARY SCHOOL DISTRICT

ACTION AGENDA ITEM

AGENDA NO: 5.D. TOPIC: Classified Personnel Report

SUBMITTED BY: Ms. Jacqueline Horine, Coordinator for Classified Human Resources

RECOMMENDED BY: Dr. Barbara Goodwin, Assistant Superintendent for Human Resources

DATE ASSIGNED FOR CONSIDERATION: January 25, 2018

RECOMMENDATION:

It is recommended the Governing Board approve the employments, resignations, retirements, promotions, leaves of absence, cancellations of employment, and/or terminations of classified personnel.

| <u>Position Change</u> | | | |
|-------------------------------|-------------------------------|------------------|----------|
| 1. Jones, Sabreena | EA Resource to Campus Monitor | \$10.59 | 01/22/18 |
| <u>Resignation</u> | | | |
| 1. Alicea, Angel | Trainee School Bus Driver | Other Employment | 12/22/17 |
| 2. Bohn, Monique | Campus Monitor | Other Employment | 01/30/18 |
| 3. Bowden, Jennifer | Educational Asst. | Personal Reasons | 12/22/17 |
| 4. Dominguez, Rosa | Food Service Worker | Family Reasons | 01/12/18 |
| 5. Griffin, Dennis | Food Service Worker | Health reasons | 01/09/18 |
| 6. Gutierrez, Priscilla | Ed. Assistant Ortho impaired | Unknown reasons | 01/12/18 |
| 7. Howard, Pamela | Bus Monitor | Personal Reasons | 01/11/18 |
| 8. Sanchez, Emilio | Ed. Assistant-SPED SE-CD | Other Employment | 01/12/18 |
| 9. Winn, Jill | Accounting Budget Supervisor | Other Employment | 01/26/18 |
| 10. Yares, Shari | EA Autism | Personal Reasons | 01/19/18 |